



U. S. TRUCK BODY

BODY LANGUAGE

Aluminum • FRP • Freight Plate • Moving • Service Trade Van Bodies

U.S. Truck Bodies Stay Put...

And Here's Why:

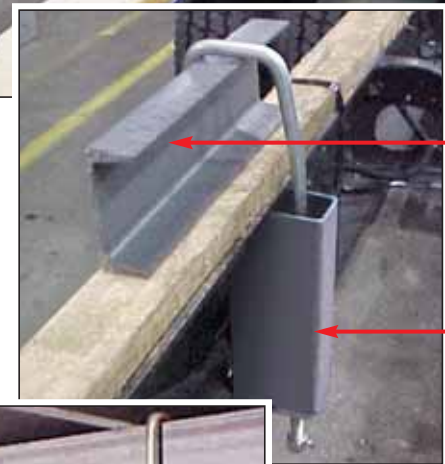
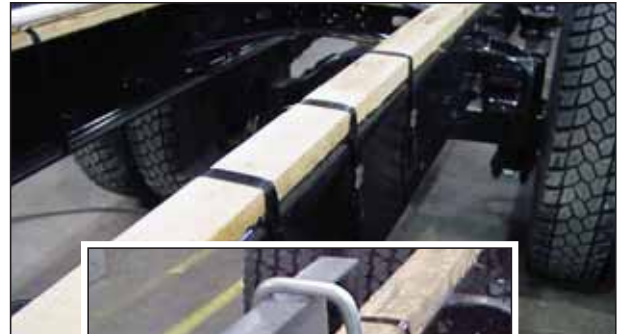
#1 – Hardwood filler strips are banded separately to the chassis frame to serve as a cushion between the two metal rails.

#2 – Crush pipe sections are fitted over the inside half of the U-Bolt and between the top and bottom of the chassis frame rails (see photo) to prevent bending of the rails as the body is tightened in place.

#3 – Zinc plated U-Bolts (5/8" thick, grade 5) clamp over the long sill of the body and around the frame rail.

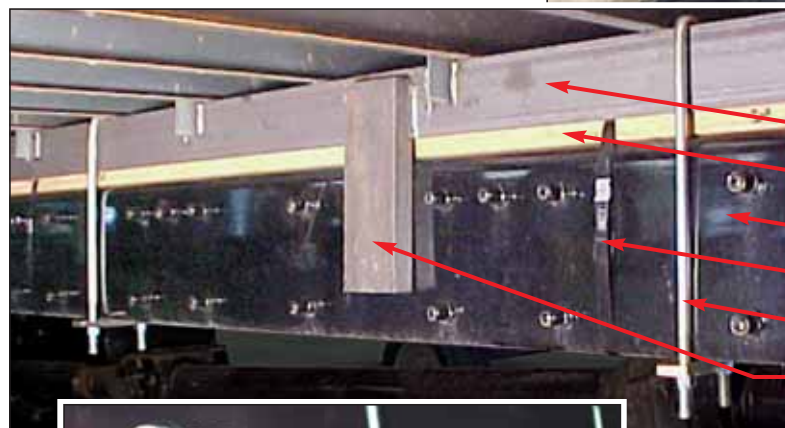
#4 – Structural steel side standards are welded to the body's long sills and extend down over the chassis frame to prevent any shifting side-to-side.

Plus, the liftgate power cable is enclosed in a PVC pipe that runs the full length of the body, inside the long sill. The PVC protects the cable and makes it easy for change-out if the cable is ever damaged and needs replacement.



Cutaway of body sill

Crush pipe



Long sill

Filler strips

Chassis frame

Banding for filler strips

U-Bolts

Side standard



For more information about our body mounts or any other standard U.S. Truck Body quality feature, visit our web site at www.ustruckbody.com or contact us at 1-800-443-0843, by fax at 815-672-1490 or by e-mail at sales@ustruckbody.com.



U.S. Truck Body
1807 N. Bloomington Street
Streator, Illinois 61364

Designers and Builders of Truck Bodies for Over a Half Century.